

Version

11091b

THEOILBIZEA

Expert Advisor for the automatic trading of TheOilBiz

TheOilBizEA

TheOilBiz Expert Advisor User Guide

© GoldRushEA.com
Gageac Et Rouillac
Dordogne 24240 France

Reproduction or translation of any part of this work by any means, electronic or mechanical, including photocopying, beyond that permitted by the copyright law, without permission of the publisher, is unlawful. This user guide and the associated Expert Advisor cannot be resold or given away for free. This guide and the associated Expert Advisor are only sold at www.GoldRushEA.com.

Table of Contents

- Risk Disclosure..... 1
- Introduction 2
- Setup Instructions..... 3
- Back Testing..... 6
- Parameters..... 9
- Frequently Asked Questions..... 14



Risk Disclosure

THE RISK OF LOSS IN OFF-EXCHANGE RETAIL FOREIGN CURRENCY MARKET TRADING CAN BE SUBSTANTIAL. YOU SHOULD, THEREFORE, FULLY CONSIDER WHETHER SUCH TRADING IS SUITABLE FOR YOU IN LIGHT OF YOUR FINANCIAL CONDITION. IN CONSIDERING WHETHER TO TRADE OR TO AUTHORIZE SOMEONE ELSE TO TRADE FOR YOU, YOU SHOULD ALSO BE AWARE OF THE FOLLOWING:

FOREX TRANSACTIONS ARE NOT TRADED ON AN EXCHANGE, AND THOSE FUNDS DEPOSITED WITH THE COUNTERPARTY FOR FOREX TRANSACTIONS MAY NOT RECEIVE THE SAME PROTECTIONS AS FUNDS USED TO MARGIN OR GUARANTEE EXCHANGE-TRADED FUTURES AND OPTIONS CONTRACTS. IF THE COUNTERPARTY BECOMES INSOLVENT AND YOU HAVE A CLAIM FOR AMOUNTS DEPOSITED OR PROFITS EARNED ON TRANSACTIONS WITH THE COUNTERPARTY, YOUR CLAIM MAY NOT RECEIVE A PRIORITY. WITHOUT A PRIORITY, YOU ARE A GENERAL CREDITOR AND YOUR CLAIM WILL BE PAID, ALONG WITH THE CLAIMS OF OTHER GENERAL CREDITORS, FROM ANY MONIES STILL AVAILABLE AFTER PRIORITY CLAIMS ARE PAID. EVEN CUSTOMER FUNDS THAT THE COUNTERPARTY KEEPS SEPARATE FROM ITS OWN OPERATING FUNDS MAY NOT BE SAFE FROM THE CLAIMS OF OTHER GENERAL AND PRIORITY CREDITORS.

THE HIGH DEGREE OF LEVERAGE THAT IS OFTEN OBTAINABLE IN FOREX TRADING CAN WORK AGAINST YOU AS WELL AS FOR YOU. THE USE OF LEVERAGE CAN LEAD TO LARGE LOSSES AS WELL AS GAINS.

DURING TECHNOLOGICAL CRISIS, ORDERS MAY NOT BE FILLED AS PLACED. TRADING ON A PARTICULAR ELECTRONIC TRADING SYSTEM MAY DIFFER FROM TRADING ON OTHER ELECTRONIC TRADING SYSTEMS, OR OTHER MARKET SYSTEMS. IF YOU UNDERTAKE TRANSACTIONS ON AN ELECTRONIC TRADING SYSTEM, YOU WILL BE EXPOSED TO RISK ASSOCIATED WITH THE SYSTEM, INCLUDING THE FAILURE OF HARDWARE AND SOFTWARE. THE RESULT OF ANY SYSTEM FAILURE MAY BE THAT YOUR ORDER IS EITHER NOT EXECUTED ACCORDING TO YOUR INSTRUCTIONS OR IS NOT EXECUTED AT ALL.

THIS BRIEF STATEMENT CANNOT DISCLOSE ALL THE RISKS AND SIGNIFICANT ASPECTS OF THE FOREX MARKETS. THEREFORE, YOU SHOULD CAREFULLY REVIEW THIS DISCLOSURE DOCUMENT BEFORE YOU TRADE.

THE CONTENTS OF THIS GUIDE ARE FOR INFORMATIONAL PURPOSES ONLY. NO PART OF THIS PUBLICATION IS A SOLICITATION OR AN OFFER TO BUY OR SELL ANY FINANCIAL MARKET. EXAMPLES ARE PROVIDED FOR ILLUSTRATION PURPOSES ONLY AND SHOULD NOT BE CONSTRUCTED AS INVESTMENT ADVICE OR STRATEGY.

ALL TRADE EXAMPLES ARE HYPOTHETICAL. NO REPRESENTATION IS MADE THAT ANY ACCOUNT OR TRADER WILL OR IS LIKELY TO ACHIEVE PROFITS OR LOSSES SIMILAR TO THOSE DISCUSSED IN THIS GUIDE. BY PURCHASING THIS GUIDE AND THE ASSOCIATED EXPERT ADVISOR AND/OR SUBSCRIBING TO OUR MAILING LIST YOU WILL BE DEEMED TO HAVE ACCEPTED THESE AND ALL OTHER TERMS FOUND ON OUR WEB PAGE WWW.GOLDRUSHEA.COM IN FULL.

THE INFORMATION FOUND IN THIS GUIDE IS NOT INTENDED FOR DISTRIBUTION TO, OR USE BY ANY PERSON OR ENTITY IN ANY JURISDICTION OR COUNTRY WHERE SUCH DISTRIBUTION OR USE WOULD BE CONTRARY TO THE LAW OR REGULATION OR WHICH WOULD SUBJECT US TO ANY REGISTRATION REQUIREMENT WITHIN SUCH JURISDICTION OR COUNTRY.

CFRC RULE 4.41 - HYPOTHETICAL OR SIMULATED PERFORMANCE RESULTS HAVE CERTAIN LIMITATIONS. UNLIKE AN ACTUAL PERFORMANCE RECORD, SIMULATED RESULTS DO NOT REPRESENT ACTUAL TRADING. ALSO, SINCE THE TRADES HAVE NOT BEEN EXECUTED, THE RESULTS MAY HAVE UNDER-OR OVER COMPENSATED FOR THE IMPACT, IF ANY, OF CERTAIN MARKET FACTORS, SUCH AS LACK OF LIQUIDITY. SIMULATED TRADING PROGRAMS IN GENERAL ARE ALSO SUBJECT TO THE FACT THAT THEY ARE DESIGNED WITH THE BENEFIT OF HINDSIGHT. NO REPRESENTATION IS BEING MADE THAT ANY ACCOUNT WILL OR IS LIKELY TO ACHIEVE PROFIT OR LOSSES SIMILAR TO THOSE SHOWN.

Introduction

AN EXPERT ADVISOR (OR EA) IS AN AUTOMATED COMMODITIES, FOREX OR OTHER FINANCIAL INSTRUMENT TRADING PROGRAM. THIS EXPERT ADVISOR REQUIRES A PLATFORM AND ACCOUNT WITH A BROKER IN ORDER TO TRADE. THE PLATFORM SHOULD BE METATRADER4 (AKA MT4).

THE EA CAN RUN AND TRADE 24 HOURS A DAY. THE EA TRADES ARE BASED ON SET LOGICAL RULES AND ELIMINATE PHYSIOLOGICAL DECISIONS WHICH HUMANS USUALLY TAKE WHEN THEY ENCOUNTER GREED OR FEAR, HOWEVER IT IS RECOMMENDED THAT THE USER DECIDE ON THE BEST TIMES TO USE THE AUTOMATIC TRADING ROBOT IN ORDER TO AVOID FLAT TRADING PERIODS AND NEWS RELEASES.

THE EXPERT ADVISOR ONLY WORKS WHEN IT IS DEPLOYED ON MT4 (META TRADER 4) TRADING PLATFORM WITH AN INTERNET CONNECTION.

YOU NEED TO HAVE ALREADY PURCHASED AND INSTALLED THEOILBIZ TRADING SYSTEM FROM WWW.THEOILBIZ.COM IN ORDER FOR THE EA TO WORK AS IT RELIES ON THE TCCI AND THEOILBIZ INDICATORS BEING INSTALLED AND AVAILABLE.

THIS EA IS IN NO WAY PROVIDED BY OR AFFILIATED WITH JOHN CAMPBELL OR WWW.THEOILBIZ.COM BUT IT HAS BEEN DEVELOPED WITH HIS PERMISSION. ALL SUPPORT ISSUES SHOULD BE SENT BY E-MAIL DIRECTLY TO SUPPORT@GOLDRUSHEA.COM (WITH THE SUBJECT LINE 'GOLDTRADEPRO EA SUPPORT ENQUIRY' AND WE WILL ENDEAVOR TO ACTION YOUR ENQUIRY WITHIN 48 HOURS.

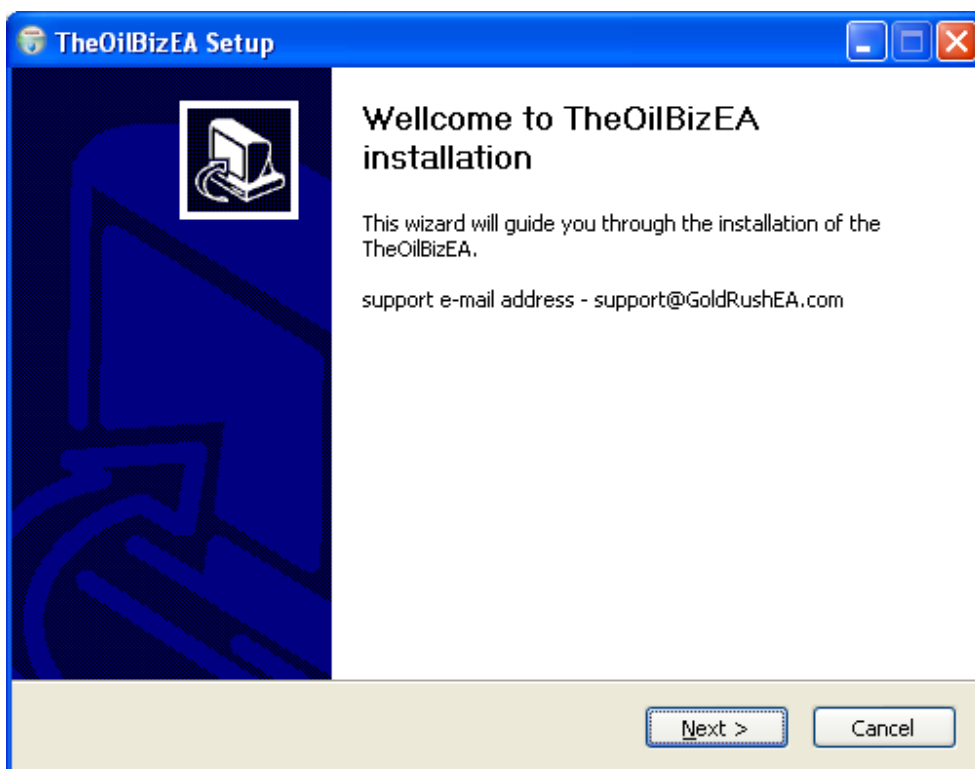
Setup Instructions

FOLLOW THESE STEP BY STEP INSTRUCTIONS TO INSTALL THE EXPERT ADVISOR.

DOWNLOAD 'THEOILBIZEA.EXE' FILE FROM THIS WEBSITE:

[HTTP://WWW.GOLDRUSHEA.COM/THEOILBIZEA.HTM](http://www.goldrushea.com/theoilbizea.htm) AND SAVE IT TO AN AREA ON YOUR PC'S HARD DISK SUCH AS THE DESKTOP.

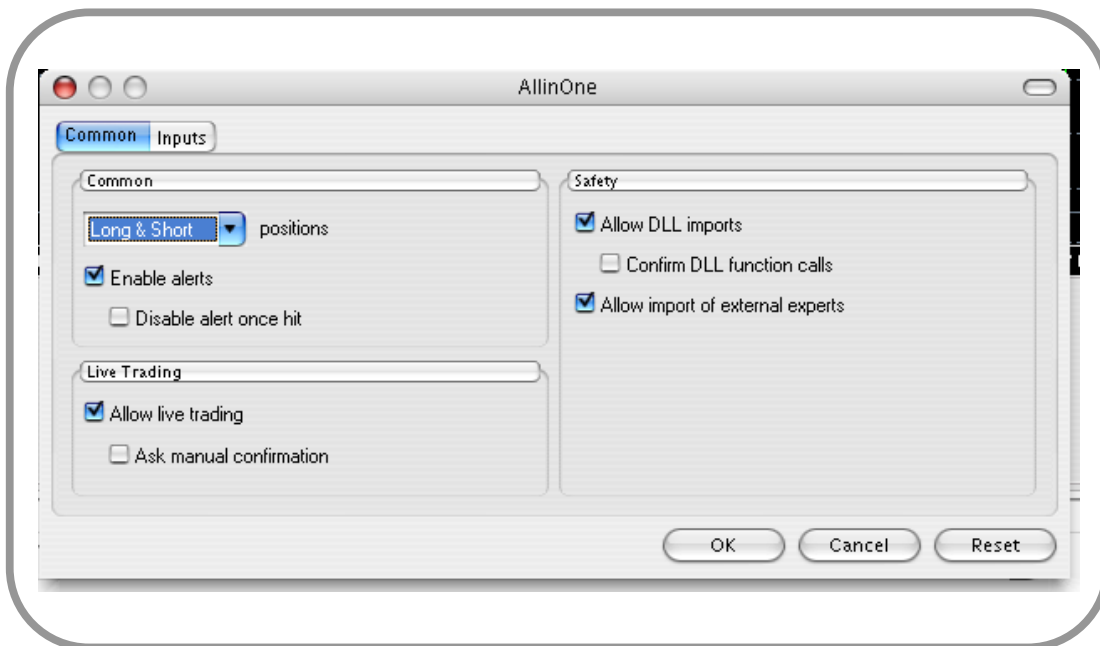
- 1) LOCATE THE 'GOLDTRADEPRO.EXE' FILE YOU HAVE DOWNLOADED AND RUN IT BY DOUBLE CLICKING THE FILE. THE FOLLOWING WINDOW WILL APPEAR:



- 2) CLICK NEXT AND THEN REVIEW AND AGREE TO THE LICENSE AGREEMENT. USE THE BROWSE BUTTON TO SEARCH FOR THE PROGRAM FOLDER FOR THE INSTALLATION OF METATRADER YOU WANT TO USE. N.B. IF YOU ARE USING FXPRO THEN THIS WILL TYPICALLY BE C:\PROGRAM FILES\FXPRO METATRADER. NOW CLICK INSTALL. ONCE THE INSTALLATION HAS COMPLETED CLICK 'FINISH'.

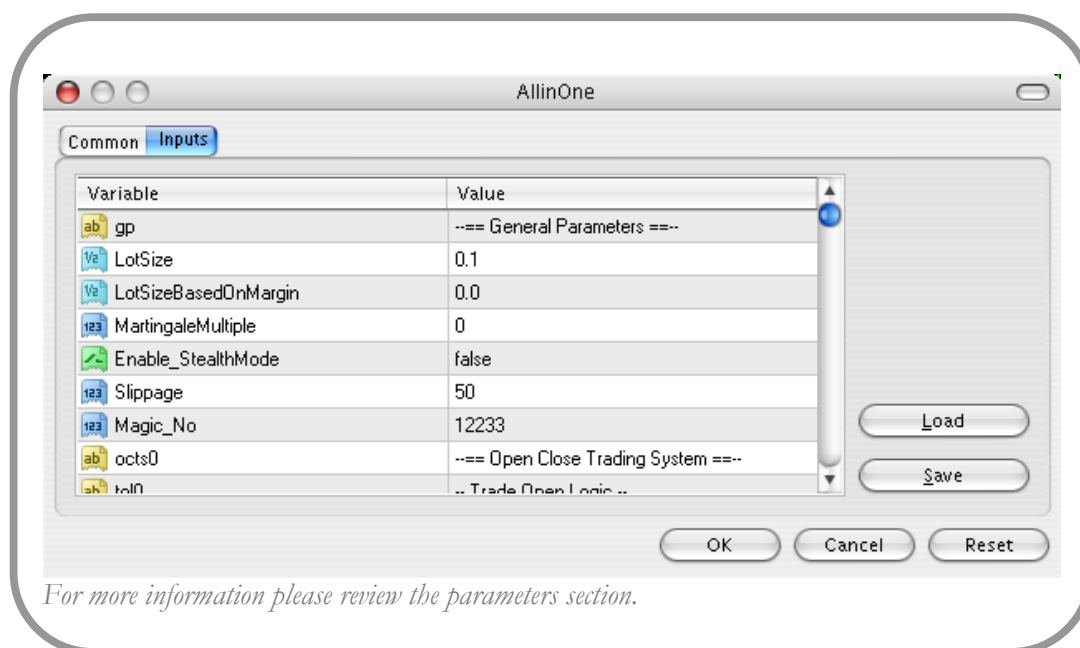
THEOILBIZ EXPERT ADVISOR

- 3) NOW RESTART THE VERSION OF METATRADER YOU HAVE INSTALLED THE EA TO. PLEASE NOT THAT YOU WILL ALSO NEED TO HAVE INSTALLED THEOILBIZ AND TCCI INDICATORS (FROM WWW.THEOILBIZ.COM) INTO THIS VERSION OF METATRADER AND THE 'OIL' TEMPLATE AS WELL.
- 4) OPEN UP A OIL 30M CHART AND APPLY THE 'OIL' TEMPLATE BY RIGHT CLICKING THE CHART AND CHOOSING THE TEMPLATE.
- 5) LOCATE NAVIGATOR PANEL AND THEN EXPAND "EXPERT ADVISORS" BY CLICK THE SMALL PLUS ICON.
- 6) DRAG AND DROP THE 'THEOILBIZEA' EXPERT ADVISOR TO THE CHART WINDOW.
- 7) A WINDOW WILL APPEAR, SET THE OPTION ON THE DIALOG AS SHOWN IN THE IMAGE BELOW



THE OIL BIZ EXPERT ADVISOR

PLEASE REVIEW ALL THE SETTINGS TO MAKE SURE THAT THEY MATCH YOUR OWN TRADING CRITERIA. A DESCRIPTION OF EACH ITEM IS ON PAGE 10 OF THIS MANUAL. THE DEFAULTS MATCH JOHN CAMPBELL'S RECOMMENDED TRADING CRITERIA AT THE TIME OF PUBLICATION, HOWEVER IT IS HIGHLY RECOMMENDED THAT YOU CHECK THAT THE MAXIMUM SIGNAL CANDLE LENGTH AND STEPPED STOP LOSS AMOUNTS STILL MATCH THE RECOMMENDED ONES.



- 8) CLICK THE 'OK' BUTTON. YOU WILL NOW BE PROMPTED TO ENTER YOUR LICENSE CODE. IF YOU HAVE NOT ALREADY PURCHASED A LICENSE FOR THE EXPERT ADVISOR THEN YOU SHOULD DO SO NOW BY VISITING THIS [WEBSITE](http://www.golddrushea.com/theoilbizea.htm):

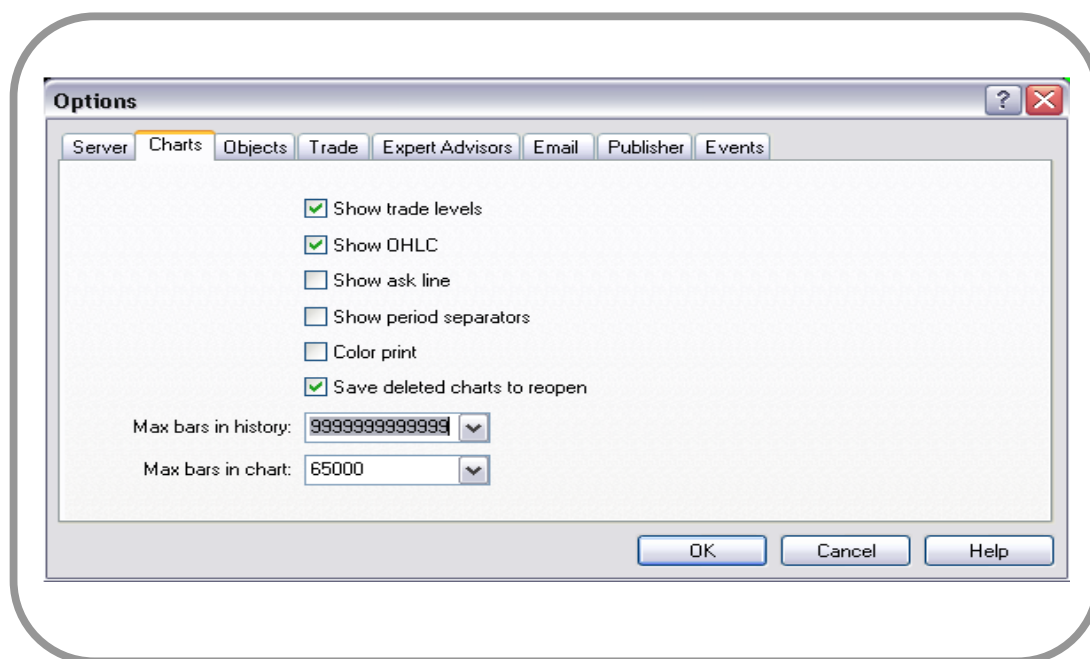
[HTTP://WWW.GOLDRUSHEA.COM/THEOILBIZEA.HTM](http://www.golddrushea.com/theoilbizea.htm). THE LICENSE ALLOWS YOU TO RUN THE EA FOR THE PERIOD YOU HAVE SUBSCRIBED TO ON ONE PC AND ON AN UNLIMITED AMOUNT OF DEMO ACCOUNTS AND ONE LIVE ACCOUNT. IF YOU NEED TO RUN THE EA ON MORE THAN ONE PC OR LIVE TRADING ACCOUNT A SEPARATE LICENSE WILL NEED TO BE PURCHASED.

- 9) THE EA IS NOW INSTALLED AND CONFIGURED FOR LIVE TRADING. THE MESSAGE 'THEOILBIZEA ☺' SHOULD BE IN THE RIGHT HAND CORNER OF THE CHART WINDOW. IF THERE IS NO MESSAGE OR THE 'FACE IS FROWNING: ☹ INSTEAD OF SMILING THEN PLEASE REVIEW THE SETTINGS DESCRIBED ABOVE.

Back Testing

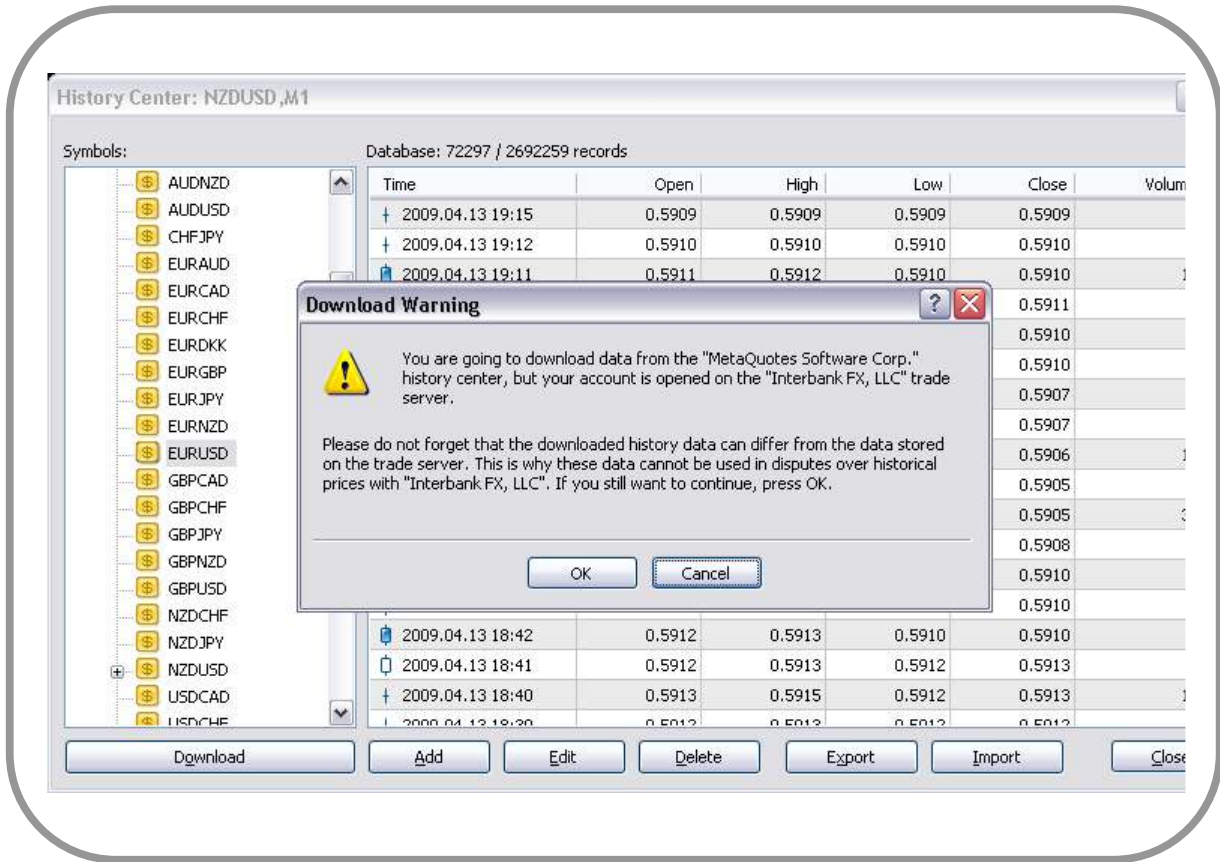
ONCE THE EA HAS BEEN INSTALLED ONTO THE MT4 (META TRADER 4) TRADING PLATFORM, YOU CAN COMMENCE BACK-TESTING (IF YOU WISH) TO TEST THE FUNCTIONALITY OF THE EA AND ALSO OPTIMIZE IT TO YOUR NEEDS. THE FOLLOWING IS STEP BY STEP INSTRUCTIONS ON HOW TO TEST EA PERFORMANCE ON HISTORIC DATA.

- 1) FROM THE MENU SELECT “TOOLS” -> “OPTIONS”. THEN OPEN “CHARTS” TAB AND ENTER 999999999999 IN THE DROPDOWN AFTER “MAX BARS IN HISTORY”. AFTERWARD CLICK “OK” BUTTON.



- 2) FROM THE MENU SELECT “TOOLS” -> “HISTORY CENTRE”. THEN SELECT CURRENT OIL CONTRACT AND '30 MINUTES' (M30)' AND CLICK THE “DOWNLOAD” BUTTON. A DIALOG WILL APPEAR, CLICK 'OK' ON DIALOG BOX. ONCE THE DATA IS DOWNLOADED, REPEAT THE STEP ONCE MORE (THIS WILL RECALCULATE ALL THE TIMEFRAMES AND CLEAN THE DATA). NOW CLOSE THE HISTORY CENTRE WINDOW AND RESTART THE METATRADER PLATFORM.

THE OILBIZ EXPERT ADVISOR



- OPEN THE STRATEGY TESTER SUB WINDOW IF IT IS NOT VISIBLE CLICK "STRATEGY TESTER" ICON FROM THE TOOLBAR.



THEOILBIZ EXPERT ADVISOR

- 4) SELECT 'THEOILBIZEA, STUART ANDERSON' FROM THE EXPERT ADVISOR DROP DOWN LIST, FROM THE SYMBOL DROP DOWN SELECT THE CURRENT OIL FUTURE. YOU CAN ALSO SELECT DATE RANGES AND MODIFY EA PARAMETERS BY CLICKING "EXPERT PROPERTIES" BUTTON. IF YOU HAVE NOT ALREADY ENTERED YOUR LICENSE CODE YOU WILL BE PROMPTED TO ENTER IT ONCE YOU BEGIN THE BACK TEST.

Parameters

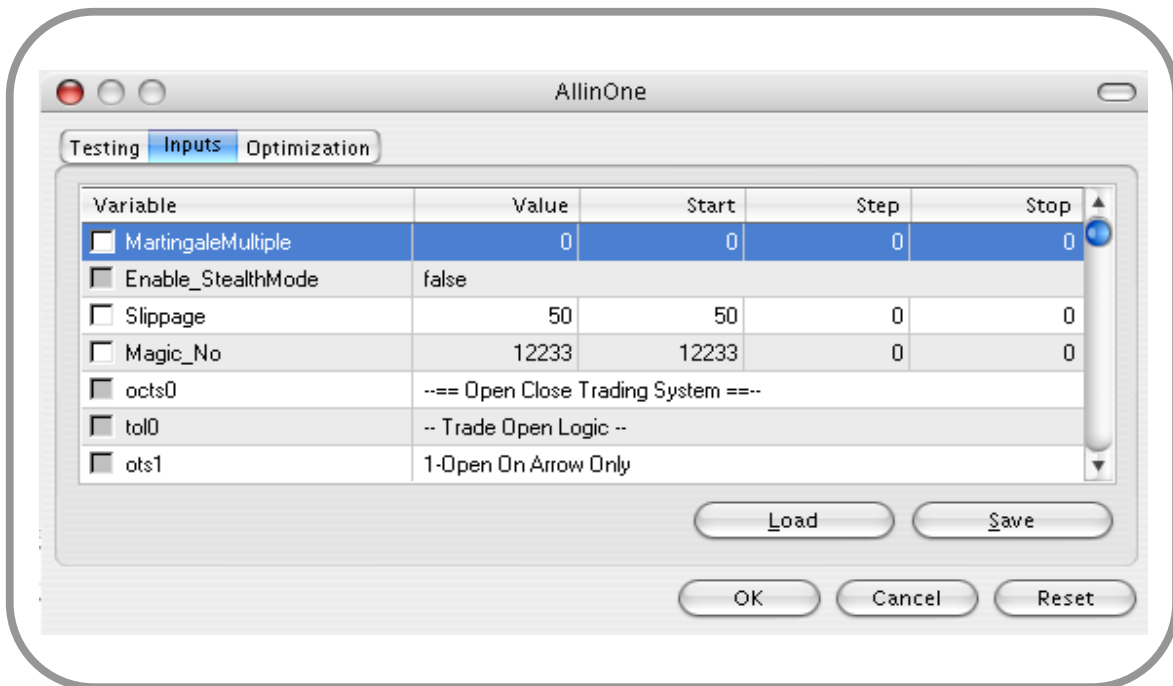
THE FOLLOWING IS A LIST OF THE PARAMETERS USED BY EXPERT ADVISOR THAT CAN BE MODIFIED. AS YOU WILL SEE THE EXPERT ADVISOR HAS MANY SETTINGS SO EACH TRADER CAN TWEAK IT TO MATCH THEIR OWN TRADING STYLE.

AT IT'S MOST BASIC THE EA WILL AUTOMATICALLY OPEN BUY AND SELL TRADES WHEN THE THEOILBIZ INDICATOR GENERATES A BUY OR SELL ARROW, AND BASED ON JOHN CAMPBELL'S TRADING RECOMMENDATIONS AT THE TIME THE EA WAS COMPILED.

CHECK THE MEMBER'S AREA OF THEOILBIZ.COM WEBSITE TO ENSURE THAT THE DEFAULT SETTINGS STILL MATCH THE CURRENT SETTINGS THAT ARE BEING RECOMMENDED BY JOHN CAMPBELL.

THERE IS A USER FORUM WHERE USER'S OF JOHN'S TRADING SYSTEMS AND THESE EXPERT ADVISORS CAN DISCUSS SETTINGS AND ANY IDEAS THEY HAVE FOR GETTING THE BEST RESULTS. YOU CAN REGISTER FOR THE FORUM AT:
WWW.YOUFORUM.BIZ/GOLDRUSHEA/REGISTER.PHP

THE EA IS HIGHLY CONFIGURABLE AND YOU CAN MODIFY THE SETTINGS TO TWEAK THE FUNCTIONAILITY OF THE EA TO MATCH YOU OWN TRADING STYLE AND ACCEPTABLE RISK/REWARD STRATEGIES. THESE SETTINGS ARE DESCRIBED BELOW. PLEASE E-MAIL SUPPORT@GOLDRUSHEA.COM IF YOU HAVE AN IDEA FOR ADDITIONAL CRITERIA AND IT MAY BE INCLUDED IN LATER VERSIONS OF THE EA.



THE OIL BIZ EXPERT ADVISOR

MAIN PARAMETERS

--== GENERAL PARAMETERS ==--

LOTSIZE - LOT SIZE USED FOR TRADING.

LOTSSIZEBASEDONMARGIN - SETS AUTO LOTS IN PERCENTAGE OF YOUR AVAILABLE MARGIN. TO ACTIVATE THIS LOTSIZE SHOULD BE SET TO 0.

MARTINGALEMULTIPLE - MULTIPLY THE POSITION SIZE OF PREVIOUS LOT AFTER A LOSING TRADE.

MARTINGALELOSETRADES - THE AMOUNT OF LOSING TRADES BEFORE STEPPING UP THE LOT SIZE BY THE MARTINGALE MULTIPLE.

MARTINGALEWINTRADES - THE AMOUNT OF WINNING TRADES BEFORE REDUCING THE ELEVATED MARTINGALE LOT SIZE BACK DOWN TO THE DEFAULT LOT SIZE.

ENABLE_STEALTHMODE - HIDES STOP AND LIMIT FROM THE BROKER. NOT RECOMMENDED TO BE USED AS YOUR PC MUST BE LEFT ON WITH LIVE CONNECTION TO THE BROKER FOR IT TO WORK.

SLIPPAGE - MAXIMUM SLIPPAGE ALLOWED FOR A TRADE.

MAGIC_NO - USED TO IDENTIFY THE EA. SET IT TO ANY RANDOM NUMBER YOU WISH. **IT IS IMPORTANT TO CHANGE THIS TO A UNIQUE NUMBER WHEN RUNNING MULTIPLE INSTANCES OF THE EA**

--== OPEN CLOSE TRADING SYSTEM ==--

-- TRADE OPEN LOGIC --

TOL - ENTER THE NUMBER THAT CORRESPONDS TO THE ENTRY METHOD YOU WANT USED.

FOLLOWING ARE THE POSSIBLE VALUES WITH THEIR DESCRIPTION:

1-OPEN ON ARROW ONLY

2-OPEN ON ARROW & TCCI

3-OPEN ON ARROW & TCCI & UTCCI

-- TRADE CLOSE LOGIC --

TCL - ENTER THE NUMBER THAT CORRESPONDS TO THE CLOSING METHOD YOU WANT USED.

FOLLOWING ARE THE POSSIBLE VALUES WITH THEIR DESCRIPTION:

1-CLOSE ON ARROW ONLY

2-CLOSE ON TCCI ONLY

3-CLOSE ON ARROW & TCCI

4-CLOSE ON ARROW & TCCI & UTCCI

5-CLOSE ON ARROW OR TCCI

6-CLOSE ON ARROW OR TCCI OR UTCCI

7-NONE

-- TRADE SYSTEM OTHER LOGICS --

SIGNALCANDLE_SIZE - SET A MAXIMUM LENGTH OF THE SIGNAL CANDLE (IN PIPS).

ALWAYSREVERSE - OPENS AN OPPOSITE TRADE WHENEVER A TRADE IS CLOSED BY EA TRADE CLOSING LOGIC.

CLOSEPREVIOUS - CLOSSES ANY OPEN TRADE BEFORE OPENING ANOTHER TRADE.

THE OIL BIZ EXPERT ADVISOR

OPEN_TCCI_CONFIRM - IF USING THE TCCI TO VALIDATE SIGNALS THIS IS THE AMOUNT OF CANDLES THAT THE EA LOOKS BEHIND THE CURRENT BAR FOR THE TCCI CHANGE IN TREND, BEFORE OPENING TRADE.

CLOSE_TCCI_CONFIRM - IF USING THE TCCI TO CLOSE TRADES, THIS IS THE AMOUNT OF CANDLES THAT THE EA LOOKS BEHIND THE CURRENT BAR FOR THE TCCI CHANGE IN TREND, BEFORE CLOSING TRADE.

OPEN ARROW CONFIRM - THE AMOUNT OF CANDLES THAT THE EA LOOKS BEHIND THE CURRENT BAR FOR THE ARROW SIGNAL.

CLOSE ARROW CONFIRM - THE AMOUNT OF CANDLES THAT THE EA LOOKS BEHIND THE CURRENT BAR FOR THE ARROW SIGNAL BEFORE CLOSING TRADE IF YOU HAVE CHOSEN TO CLOSE TRADES ON ARROW SIGNALS.

--== TRADE LIMIT ==--

SET_LIMIT - TAKE PROFIT AMOUNT IN PIPS. MUST BE AT LEAST THE MIN ALLOWED BY BROKER.

SET_STOPLOSS - STOP LOSS AMOUNT IN PIPS. MUST BE AT LEAST THE MIN ALLOWED BY BROKER.

--== TRAILING STOP LOSS PARAMETERS ==--

TS_ENABLED - ENABLE THE USE OF A TRAILING STOP LOSS.

TS_PIPS - THE AMOUNT OF THE TRAILING STOP IN PIPS. MUST BE AT LEAST THE MIN ALLOWED BY BROKER.

--== TRAILING STOP LOSS STEP PARAMETERS ==--

TSS_ENABLED - ENABLE USE OF THE STEPPED STOP LOSS.

LIMIT1_TSS - THE FIRST AMOUNT OF PIPS IN FAVOUR OF YOUR TRADE BEFORE MOVING THE STOP LOSS THE AMOUNT OF PIPS SPECIFIED IN STOP1_TSS

LIMIT2_TSS - THE SECOND AMOUNT OF PIPS IN FAVOUR OF YOUR TRADE BEFORE MOVING THE STOP LOSS THE AMOUNT OF PIPS SPECIFIED IN STOP2_TSS

LIMIT3_TSS - THE THIRD AMOUNT OF PIPS IN FAVOUR OF YOUR TRADE BEFORE MOVING THE STOP LOSS THE AMOUNT OF PIPS SPECIFIED IN STOP3_TSS

STOP0_TSS - THE INITIAL STOP LOSS SET WHEN THE TRADE IS OPENED

STOP1_TSS - THE NEW STOP LOSS SET WHEN THE AMOUNT OF PIPS SPECIFIED IN LIMIT1_TSS HAS BEEN REACHED

STOP2_TSS - THE NEW STOP LOSS SET WHEN THE AMOUNT OF PIPS SPECIFIED IN LIMIT2_TSS HAS BEEN REACHED

STOP3_TSS - THE NEW STOP LOSS SET WHEN THE AMOUNT OF PIPS SPECIFIED IN LIMIT3_TSS HAS BEEN REACHED

THE OIL BIZ EXPERT ADVISOR

--== OPEN & CLOSE TRADE ON BAR OPEN ==--

ENABLE_OPENTRADE - CHECKS THE ENTRY LOGIC ONLY ON THE OPEN OF A NEW CANDLE.

ENABLE_CLOSETRADE - CHECKS THE CLOSE LOGIC ONLY ON THE OPEN OF A NEW CANDLE.

--== MINIMUM LENGTH OF LAST TCCI TREND ==--

CONFIRM WHEN PLACING TRADE THAT THE LAST TREND FOR TCCI HAS AT LEAST SPECIFIED NUMBER OF CANDLES.

ENABLE_MLTT - ENABLES THE MLTT_LENGTH LOGIC BEFORE OPENING ANY TRADE.

MLTT_LENGTH - MINIMUM LENGTH OF CANDLES OF THE LAST TCCI TREND BEFORE ALLOWING A TREND CHANGE TO BE VALID.

--== MINIMUM PRICE MOVEMENT ==--

THE MINIMUM AMOUNT OF PRICE MOVEMENT WITHIN A NUMBER OF CANDLES BEFORE ALLOWING A TREND CHANGE TO BE VALID.

ENABLE_MPM - ENABLES THE MINIMUM PRICE MOVEMENT LOGIC

LTR_BARS_TO_CHECK - NUMBER OF BARS TO CALCULATE THE PRICE MOVEMENT.

MPM_PIPS - THE MINIMUM PIPS FOR THE PRICE MOVEMENT.

--== MINIMUM TCCI VALUE MOVEMENT ==--

CONFIRM WHEN PLACING TRADE THAT THE LAST TREND FOR TCCI HAS A MINIMUM RANGE (TCCI MOVEMENT) GREATER THAN MINIMUM SPECIFIED FOR THE AMOUNT OF CANDLES TO CHECK.

ENABLE_TVM - ENABLES THE LOGIC.

LTPR_BARS_TO_CHECK - THE AMOUNT OF CANDLES TO CHECK THE TCCI MOVEMENT ON.

TVM_VALUE - THE MINIMUM AMOUNT OF TCCI MOVEMENT.

--== THE OIL BIZ INDICATOR PARAMETERS ==--

RISK - AN INTERGER OF THE OIL BIZ INDICATOR, SHOULD NOT BE CHANGED UNLESS INSTRUCTED TO DO SO.

COUNTBARS - AN INTERGER OF THE OIL BIZ INDICATOR, SHOULD NOT BE CHANGED UNLESS INSTRUCTED TO DO SO.

--== TCCI PARAMETERS ==--

ALL THE OPTIONS FOR THE TCCI INDICATOR

--== UPPER TF TCCI PARAMETERS ==--

AN ADDITIONAL CHECK OF THE TREND IN AN UPPER TIMEFRAME IF ENABLED.

UTFP - THE AMOUNTS TO ENTER IN 'UPPERTF' TO USE IF YOU WANT TO USE AN UPPER TIMEFRAME TREND TO VALIDATE OPENING AND CLOSING TRADES.

UPPERTF - ENTER THE TIMEFRAME YOU WANT TO USE FOR THE UPPER TCCI INDICATOR.

--== TRADING TIMES ==--

SET THE TIMES FOR THE EA TO TRADE. (THESE ARE THE TIMES USED BY YOUR BROKER IN METATRADER)

THE OIL BIZ EXPERT ADVISOR

--== END OF WEEK STOP PARAMETERS==--

IT IS RECOMMENDED THAT TRADING IS ENDED AT 19.00 (FXPRO TIME) ON A FRIDAY AND THE DEFAULT SETTING STOPS THE EA AT THIS TIME. THE OTHER SETTINGS (TSP) TELL THE EA WHAT TO DO IF THERE ARE ANY OPEN TRADES AT THIS TIME. THE DEFAULT IS OPTION 4.

TSP

- 1 – DO NOTHING – LEAVE ALL OPEN TRADES IN TACT WITH CURRENT LIMITS AND STOPS.
- 2 – MOVE STOP LOSS ON ANY OPEN TRADES TO Z AMOUNT OF PIPS FROM CURRENT PRICE.
- 3 – CLOSE ANY OPEN POSITION IN PROFIT, FOR TRADES IN DEFICIT MOVE STOP LOSS.
- 4 – CLOSE ALL OPEN TRADES WHETHER OR NOT IN PROFIT.

TSPSTOPLOSSAMOUNT – THE AMOUNT OF PIPS TO USE FOR THE STOP LOSS IF TSP OPTION 2 OR 3 IS CHOSEN.

SUSPENDDATES – DATES IN A YYYY.MM.DD FORMAT THAT TRADING SHOULD BE SUSPENDED, MULTIPLE DATES CAN BE ENTERED USING A SEMI COLON.

--== NEWS PARAMETERS ==--

THIS IS WHERE YOU CAN TELL THE EXPERT ADVISOR WHEN THERE IS SCHEDULED NEWS THAT IS PREDICTED TO HAVE AN IMPACT ON A PARTICULAR CURRENCY OR CURRENCIES. THE EA QUERIES THE CALENDAR AT WWW.FOREXFACTORY.COM TO GET THIS INFORMATION.

NL – ENTER THE NUMBER OF THE OPTION (1 – 4) OF WHAT YOU WANT THE EA TO DO WHEN THERE IS A NEWS ITEM.

CURRENCY – ENTER THE THREE LETTER CURRENCY CODE AS USED AT WWW.FOREXFACTORY.COM OF THE CURRENCY THAT YOU ARE INTERESTED IN, MULTIPLE CURRENCIES CAN BE CHECKED BY SEPERATING THEM BY A SEMI COLON.

SEVERITY – THE LEVEL OF NEWS ITEM THAT YOU ARE INTERESTED IN.

MINUTESBEFORENEWS – THE AMOUNT OF MINUTES TO PAUSE THE EA BEFORE THE NEWS ITEM

MINUTESAFTERNEWS – THE AMOUNT OF MINUTES TO PAUSE THE EA AFTER THE NEWS ITEM

STOPLOSSAMOUNT – AMOUNT OF STOP LOSS IF OPTION 3 OR 4 CHOSEN.

--== STOP PARAMETERS ==--

THE ABILITY TO STOP THE EA AFTER IT HAS OPENED OR CLOSED A SET AMOUNT OF TRADES.

SL – ENTER THE OPTION (0-3) YOU WANT USED

OPENAMOUNT – THE AMOUNT OF TRADES OPENED BY THE EA BEFORE PAUSING

CLOSEAMOUNT – THE AMOUNT OF TRADES CLOSED BY THE EA BEFORE PAUSING

HOURSAMOUNT – THE AMOUNT OF HOURS TO PAUSE IF OPTION 2 USED

SENDEMAILNOTIFICATIONS – ENABLES THE EA TO SEND OUT E-MAILS WHENEVER IT OPENS OR MODIFIES A TRADE. (YOU ALSO NEED TO ENABLE AND CONFIGURE E-MAIL ALERTS WITHIN METATRADER BY CLICKING TOOL-OPTIONS-EMAIL FOR THIS TO WORK)

DST – SET THIS TO TRUE WHEN DAYLIGHT SAVING TIME BEGINS SO THE NEWS PAUSING FEATURE CONTINUES TO WORK PROPERLY.

VERSION – THE VERSION NUMBER OF THE EXPERT ADVISOR BEING USED

Frequently Asked Questions

Q: WHAT IS EXPERT ADVISOR (EA)?

A: EXPERT ADVISOR IS AN AUTOMATED ROBOTIC SCRIPT WRITTEN IN MQ4 LANGUAGE THAT CAN WORK ON THE METATRADER4 PLATFORM AND MAKE TRADES FOR YOU! EXPERT ADVISORS CAN ONLY WORK WHEN THE CONNECTION TO THE INTERNET (IN METATRADER4) IS ESTABLISHED. YOU MUST ALWAYS KEEP YOUR METATRADER4 ONLINE AND WORKING FOR THE EXPERT ADVISOR TO OPEN (AND CLOSE TRADES).

Q: WHAT PLATFORM ARE THEY WORKING ON?

A: GOLDTRADEPRO EXPERT ADVISOR IS DEVELOPED FOR THE METATRADER4 PLATFORM ONLY.

Q: I DON'T HAVE AN ACCOUNT WITH A BROKER WHO DOESN'T USE MT4, CAN I USE THE EA?

A: YES, SETUP A DEMO TRADING ACCOUNT WITH FXPRO AND LOAD THE EA, CONFIGURE METATRADER TO SEND E-MAIL ALERTS AND THE EXPERT ADVISOR WILL E-MAIL YOU WHEN IT OPENS OR MODIFIES A TRADE.

Q: WHAT IF MY PC LOST POWER OR REBOOTED?

A: NO PROBLEM HERE! JUST RUN METATRADER AGAIN AND TURN ON THE EXPERT ADVISOR. IT WILL CONTINUE TRADING.

Q: HOW DO I REMOVE THE EXPERT ADVISOR?

A: TO REMOVE AN ADVISOR, JUST RIGHT CLICK ON ITS NAME OR FACE IN THE TOP RIGHT PART OF THE CHART AND SELECT «EXPERT ADVISORS ->REMOVE». DON'T FORGET TO CLOSE ALL OPEN TRADES OF THE CURRENT EA IF YOU REMOVE IT.

Q: IMPORTANT: DEMO OR REAL ACCOUNT?

A: YOU SHOULD ALWAYS TEST YOUR ADVISOR ON A DEMO ACCOUNT FIRST TO CHECK IF YOUR BROKER IS COMPATIBLE WITH THE EXPERT ADVISOR. NEVER TRADE ON REAL ACCOUNT WITHOUT TESTING ON DEMO FIRST AND FAMILIARIZING YOURSELF WITH ALL THE SETTINGS!! SOME BROKERS FULFILL ORDERS TOO SLOWLY; GIVE BAD QUOTES OR HAVE TOO HIGH A SPREAD OR SLIPPAGE. IF SO, WE RECOMMEND YOU TO TRY THE DEMO ACCOUNT WITH ANOTHER BROKER. THIS EA HAS BEEN TESTED THOROUGHLY ON SEVERAL OF THE MOST POPULAR METATRADER BROKERS INCLUDING FXPRO AND ORION.

Q: HOW TO RUN SEVERAL ADVISORS ON ONE ACCOUNT?

A: YOU CAN RUN SEVERAL ADVISORS AT THE SAME TIME TO INCREASE YOUR PROFITS AND MINIMIZE RISKS! JUST OPEN SEVERAL PRICE CHARTS AND ATTACH EACH ADVISOR TO ITS OWN CHART! THIS WAY, THEY CAN ALL WORK AT THE SAME TIME. DON'T TRY TO ATTACH 2 ADVISORS TO THE SAME CHART. THAT WON'T WORK! WARNING: DON'T RUN TOO MANY ADVISORS IF YOUR DEPOSIT IS TOO SMALL. TRY ON A DEMO ACCOUNT FIRST TO SEE HOW THEY WORK TOGETHER! ENSURE THAT THE MAGIC NUMBER IS DIFFERENT FOR EACH INSTANCE OF AN EXPERT ADVISOR TRADING ON ONE ACCOUNT.

Q: WHY ARE SOME EXPERT ADVISORS SHOWN IN GREY?

A: EXPERT ADVISORS THAT ARE SHOWN IN GREY DON'T HAVE OPEN SOURCE CODE. IT MERELY MEANS THAT THE CODE CANNOT BE COPIED EASILY. IT IS NOT AN ISSUE AND THEY WILL STILL WORK IF THEY HAVE THE SMILING FACE ON THE TOP RIGHT OF THE

THE OIL BIZ EXPERT ADVISOR

CHART. TEMPLATE MT4 EXPERTS LIKE "MACD SAMPLE" AND "MOVING AVERAGE" ARE FREE SAMPLES WITH OPEN SOURCE AND THAT'S WHY THEY ARE SHOWN IN YELLOW.